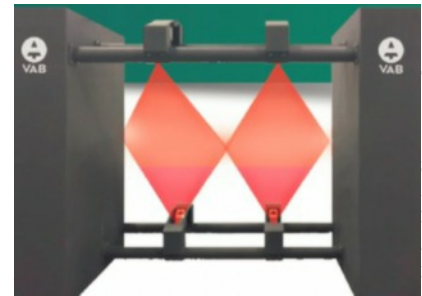
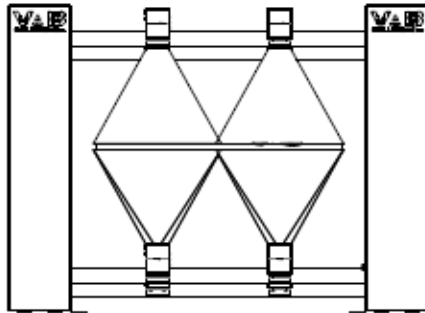
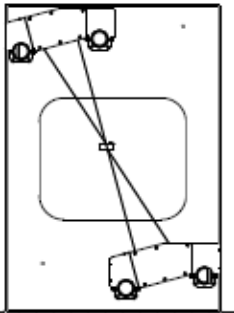




SAWMILL TRANSVERSE SCANNER 2nd GEN

THE BEST TRIMMER SCANNER & VISION SYSTEM

- The vision system is based on a principle of triangulation laser measured by high resolution cameras.
- The system makes it possible to carry out all the geometric measurements required for an efficient and effective trimming/grading.
- The intensity response of the laser lines makes it possible to introduce a detection of color defect such as white speck and Rot.
- The vision heads are composed of a laser and a high resolution camera and are pre-calibrated.
- The following images illustrates the vision system as installed transversely of the transfer between the loader and the positioning system before the trimmer.



Detection and Accuracy of Various Defects

- Thickness: $\pm 0.005''$
- Width: $\pm 0.020''$
- Length: $\pm 0.060''$
- Maximum and equivalent skip: $\pm 0,005''$
- Maximum and equivalent wane: $\pm 0,015''$
- Holes and surface defects: $\pm 0,015''$
- Split and shakes 2ND Gen
- White speck and rot 2ND Gen

SAWMILL TRANSVERSE SCANNER 2nd GEN

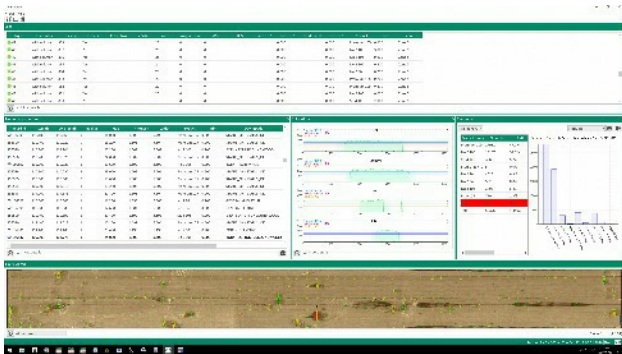
The mechanical characteristics of the vision system are as follows:

- Independent structure anchored to the floor, avoiding all unwanted vibrations and grounding as occasionally caused by welding operations;
- Robust camera and laser housings for mechanical impact protection, and dust and watertight;
- Increased mechanical protection to prevent falling pieces of wood on the vision components.

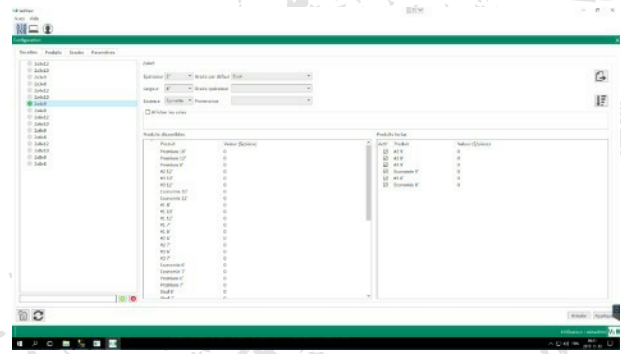
All software applications are installed in a server-type computer. A complete control box is installed on the vision system.

The optimizer is supplied with VAB newest production & quality interface called **VABVIEW** assuring your

QUALITY, PROFITABILITY & PRODUCTIVITÉ OBJECTIVES



VABVIEW INTERFACE



**VABVIEW INTERFACE
PRODUCTS & RECIPES**



VAB

UNE COMPAGNIE DE TIMBER AUTOMATION
A TIMBER AUTOMATION COMPANY

www.vab-solutions.com

4695, rue de la Pascaline, Lévis (Québec) Canada G6W0L9
Bureau/Office 866-834-0606 | Téléc./Fax 418-834-0645